

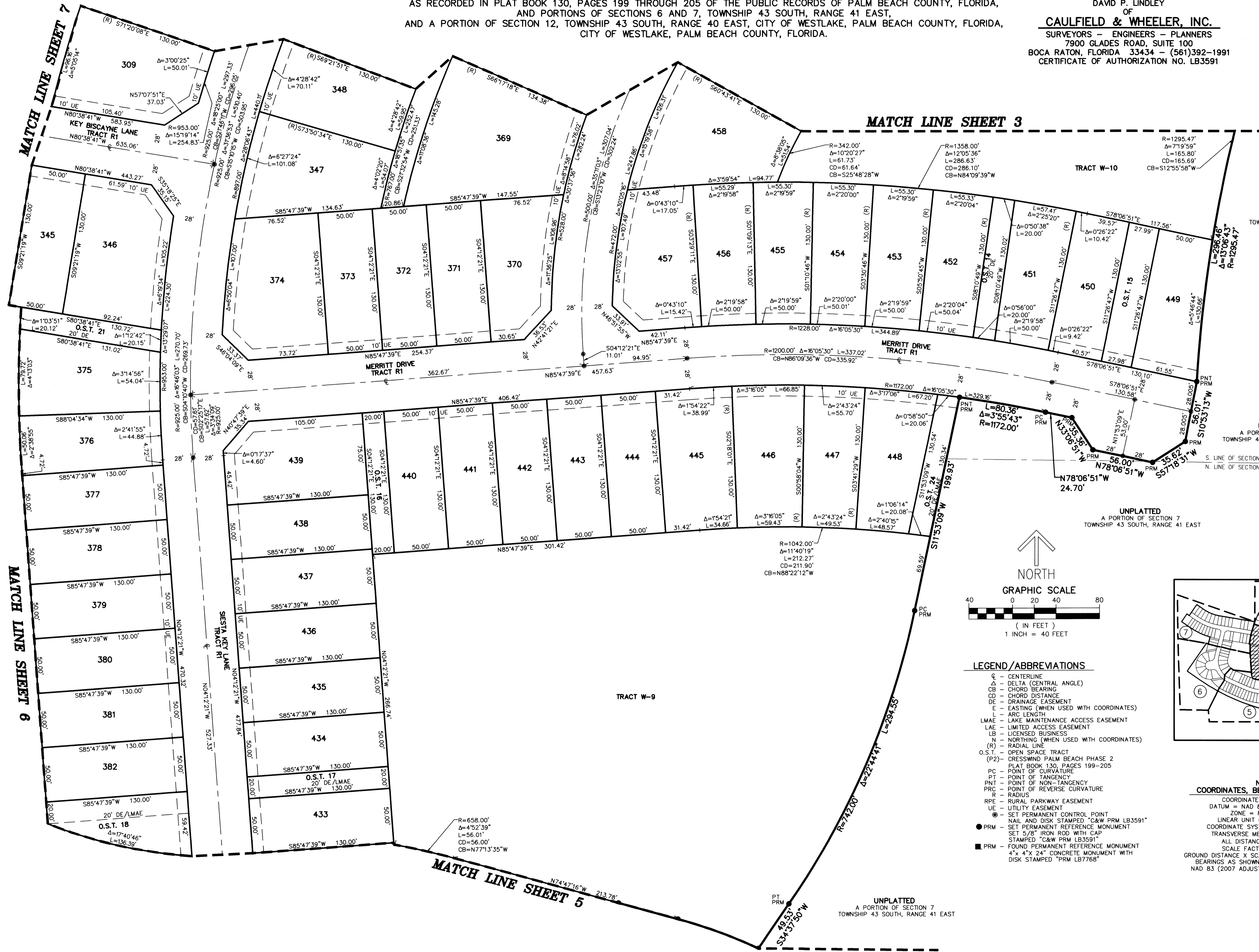
# CRESSWIND PALM BEACH PHASE 3

BEING A REPLAT OF A PORTION OF O.S.T. 20, CRESSWIND PALM BEACH PHASE 2,  
AS RECORDED IN PLAT BOOK 130, PAGES 199 THROUGH 205 OF THE PUBLIC RECORDS OF PALM BEACH COUNTY, FLORIDA,  
AND PORTIONS OF SECTIONS 6 AND 7, TOWNSHIP 43 SOUTH, RANGE 41 EAST,  
AND A PORTION OF SECTION 12, TOWNSHIP 43 SOUTH, RANGE 40 EAST, CITY OF WESTLAKE, PALM BEACH COUNTY, FLORIDA.

THIS INSTRUMENT PREPARED BY  
DAVID P. LINDLEY  
OF  
**CAULFIELD & WHEELER, INC.**  
SURVEYORS - ENGINEERS - PLANNERS  
7900 GLADES ROAD, SUITE 100  
BOCA RATON, FLORIDA 33434 - (561)392-1991  
CERTIFICATE OF AUTHORIZATION NO. LB3591

123

SHEET 4 OF 7

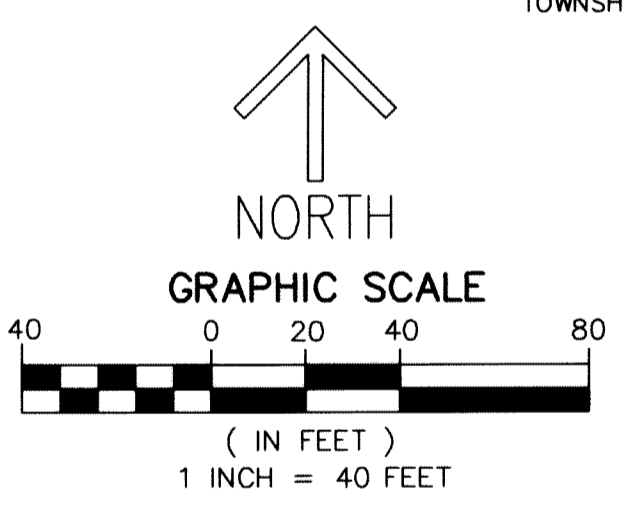


UNPLATTED  
A PORTION OF SECTION 6  
TOWNSHIP 43 SOUTH, RANGE 41 EAST

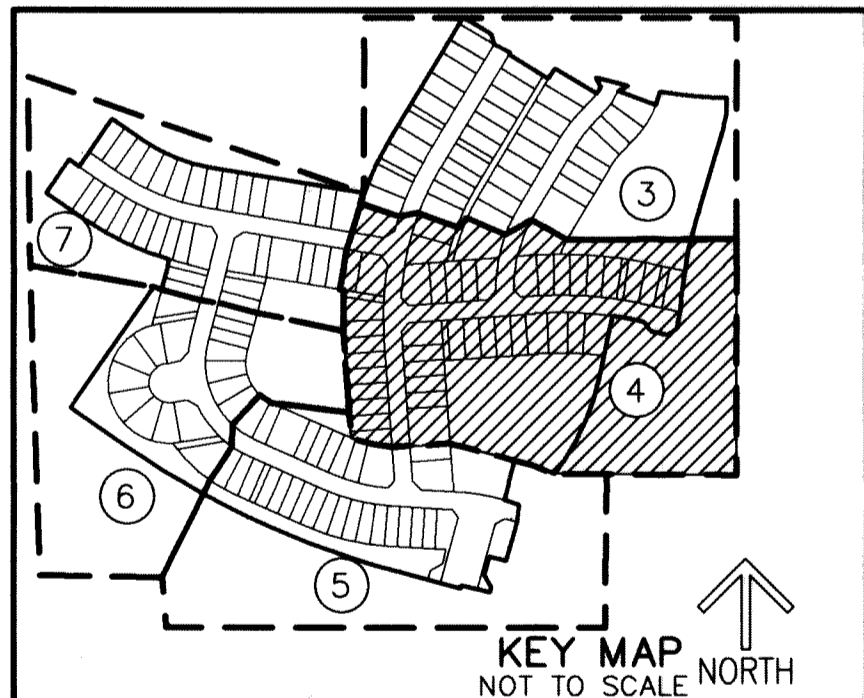
UNPLATTED  
A PORTION OF SECTION 6  
TOWNSHIP 43 SOUTH, RANGE 41 EAST

S. LINE OF SECTION 6, TOWNSHIP 43 SOUTH, RANGE 41 EAST  
N. LINE OF SECTION 7, TOWNSHIP 43 SOUTH, RANGE 41 EAST

UNPLATTED  
A PORTION OF SECTION 7  
TOWNSHIP 43 SOUTH, RANGE 41 EAST



- LEGEND / ABBREVIATIONS**
- CL - CENTERLINE
  - Δ - DELTA (CENTRAL ANGLE)
  - CB - CHORD BEARING
  - CD - CHORD DISTANCE
  - DE - DRAINAGE EASEMENT
  - E - EASTING (WHEN USED WITH COORDINATES)
  - L - ARC LENGTH
  - LMAE - LAKE MAINTENANCE ACCESS EASEMENT
  - LAE - LIMITED ACCESS EASEMENT
  - LB - LICENSED BUSINESS
  - N - NORTHING (WHEN USED WITH COORDINATES)
  - (R) - RADIAL LINE
  - O.S.T. - OPEN SPACE TRACT
  - (P2) - CRESSWIND PALM BEACH PHASE 2
  - PLAT BOOK 130, PAGES 199-205
  - PC - POINT OF CURVATURE
  - PT - POINT OF TANGENCY
  - PNT - POINT OF TANGENCY
  - PRC - POINT OF REVERSE CURVATURE
  - R - RADIUS
  - RPE - RURAL PARKWAY EASEMENT
  - UE - UTILITY EASEMENT
  - ⊙ - SET PERMANENT CONTROL POINT
  - ⊙ - SET PERMANENT REFERENCE MONUMENT
  - ⊙ - SET PERMANENT REFERENCE MONUMENT
  - ⊙ - SET 5/8" IRON ROD WITH CAP STAMPED "C&W PRM LB3591"
  - - FOUND PERMANENT REFERENCE MONUMENT
  - - FOUND PERMANENT REFERENCE MONUMENT WITH DISK STAMPED "PRM LB7768"



**NOTES**  
**COORDINATES, BEARINGS AND DISTANCES**

COORDINATES SHOWN ARE GRID  
DATUM = NAD 83 (2007 ADJUSTMENT)  
ZONE = FLORIDA EAST  
LINEAR UNIT = US SURVEY FEET  
COORDINATE SYSTEM 1983 STATE PLANE  
TRANSVERSE MERCATOR PROJECTION  
ALL DISTANCES ARE GROUND  
SCALE FACTOR = 1.0000017  
GROUND DISTANCE X SCALE FACTOR = GRID DISTANCE  
BEARINGS AS SHOWN HEREON ARE GRID DATUM,  
NAD 83 (2007 ADJUSTMENT), FLORIDA EAST ZONE.

UNPLATTED  
A PORTION OF SECTION 7  
TOWNSHIP 43 SOUTH, RANGE 41 EAST